

Coral Strand LTD



2979 KALAKAUA AVENUE #502

\$5,500,000 Fee Simple
2 Bd /3 Ba | MLS 201930926
Stephen A. Cipres (RB-20034)
Elite Pacific Properties, LLC
Phone: 295-5009

Colony Beach



2893 KALAKAUA AVENUE #2

\$3,200,000 Fee Simple
2 Bd /2 Ba | MLS 202015755
Suzy Hemmings (RS-50893)
Elizabeth Perry (RS-58331)
Carole Kaili Daly (RS-43830)
Berkshire Hathaway HmSvc HI RE
Suzy: 342-0077 / Elizabeth: 384-7623 / Carole: 341-1000

Tahitienne Inc



2999 KALAKAUA AVENUE #402/403

\$2,995,000 Fee Simple
2 Bd /2 Ba | MLS 201933598
Vicki P. Hossellman (RS-38718)
Coldwell Banker Pacific Prop.
Phone: 351-3833

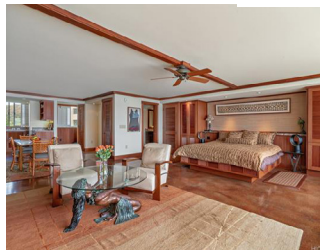
Diamond Head Apts Ltd



2969 KALAKAUA AVENUE #104

\$2,280,000 Fee Simple
2 Bd /2 Ba | MLS 202011746
Tomoya Tsuruhara (RS-74768)
Hawaii Military Realty, Inc.
Phone: 286-8900

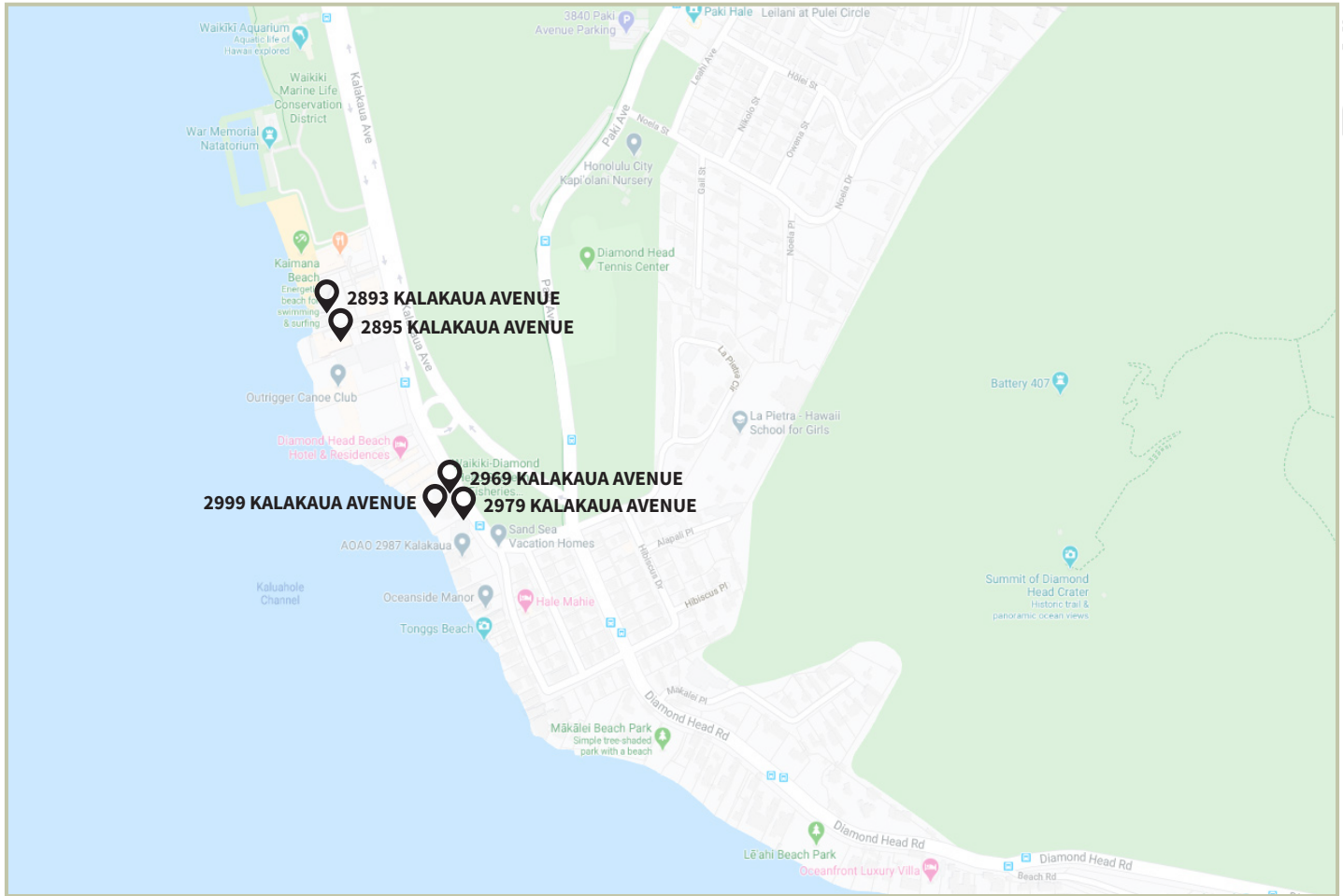
Colony Surf LTD



2895 KALAKAUA AVENUE #901

\$2,250,000 Fee Simple
1 Bd /1 Ba | MLS 202003199
Anne Oliver (RB-17132)
Coldwell Banker Pacific Prop.
Phone: 292-2800

Parameters: All active condos in the Gold Coast area priced at \$2M+
Property photos courtesy of Honolulu Board of REALTORS® and/or listing agent.



Courtesy of Google Maps.
Information deemed reliable but not guaranteed.



DIANA S. KANAGAWA
Escrow Officer
Kahala
(808) 733-6028
dkanagawa@tghawaii.com



TITLE GUARANTY
HAWAII

www.tghawaii.com